

17,135




Farmers Electric Cooperative

2000 I-30 E
Greenville, TX 75402

FILED FOR RECORD
at 12:30 o'clock P M

NOV 23 2021

BECKY LANDRUM
County Clerk, Hunt County, Tex.
By 

Wednesday, November 10, 2021

Office of Hunt County Commissioners
PO BOX 1097
Greenville TX 75403

Farmers Electric Cooperative Member: CHARLES ONEY
Service Order Number: 2021091315

Greetings:

Farmers Electric Cooperative, Inc. is requesting permission to construct electrical power distribution facilities which will cross County Road 3623 which is located 740 ft west of CR 3622 in Hunt County, Texas.

Site location map and construction sketches are enclosed. The construction sketch details the proposed work. All road crossings will have a minimum vertical clearance of 22 feet.

If you have any questions, please contact me at any time.

Sincerely,

Cody Bland

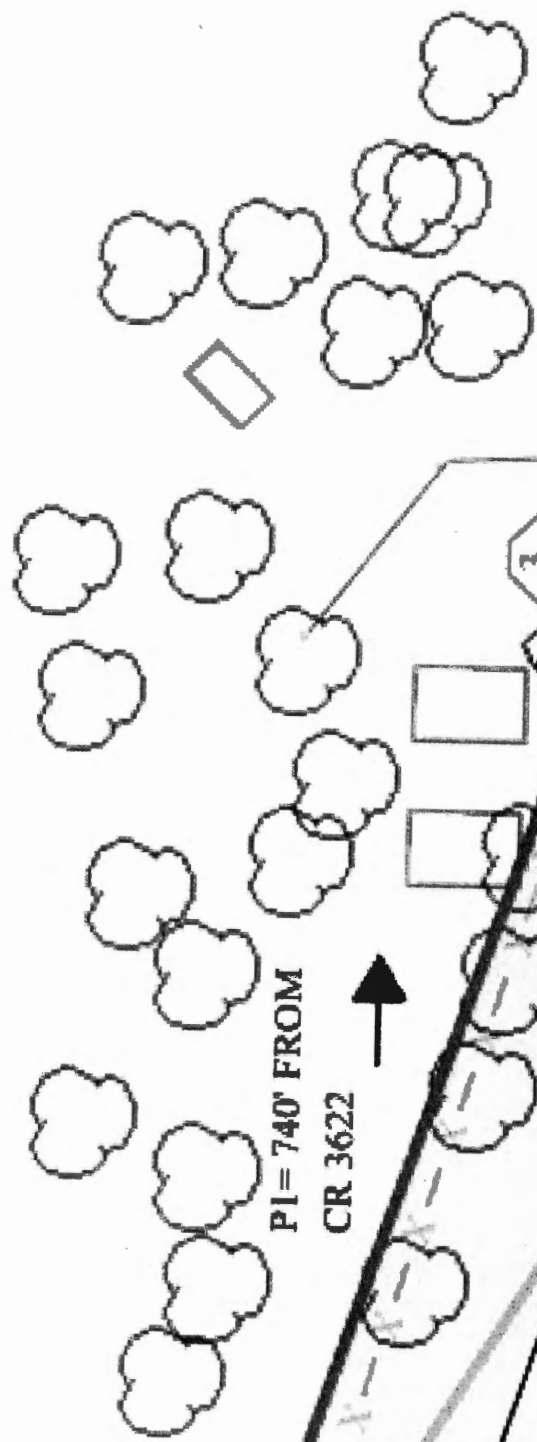
Project Coordinator
cbland@farmersselectric.coop
Phone 903-456-1722

Submitted by Brandon Darrow
bdarrow@farmersselectric.coop
Field Engineering Coordinator

Enclosures

32060950093

PI = 740' FROM
CR 3622



Block
Lot 4

4 ACSR Block
Lot 3

Service Order#
2021091315
Charles Oney
Cross CR 3623 at
Pole# 033903.

